

Implementing Hatchery Reform in the State of Idaho

Paul Kline
Idaho Department of Fish and Game

Washington/British Columbia Chapter Meeting
American Fisheries Society
March 20, 2018



Idaho's Hatchery Programs

- Idaho anadromous hatcheries are operated by the State, the Nez Perce Tribe, the USFWS and soon - the SBT
- Funding is provided by BPA, USFWS, and the Idaho Power Company
- Mitigation for hydropower dam construction and operation
- Primary purpose - to produce fish for Tribal and non-tribal harvest



Idaho's Hatchery Programs

- Idaho hatchery production approximately:
- 14 M Sp/su Chinook Salmon
- 5 M Fall Chinook Salmon
- 8 M Summer Steelhead
- 1.5 M Coho Salmon
- 1 M Sockeye Salmon
- TOTAL: 29.5 M

13 hatcheries
plus satellites



Idaho's Hatchery Programs

- Putting release numbers in perspective for sp/su Chinook Salmon and Summer Steelhead:
 - Snake River hatcheries produce 34% of all sp/su Chinook Salmon produced in Columbia River drainage and...
 - 61% of all Summer Steelhead produced in Columbia River drainage



Columbia Basin Hatchery Reform

1990

1994

1998

2000

2003

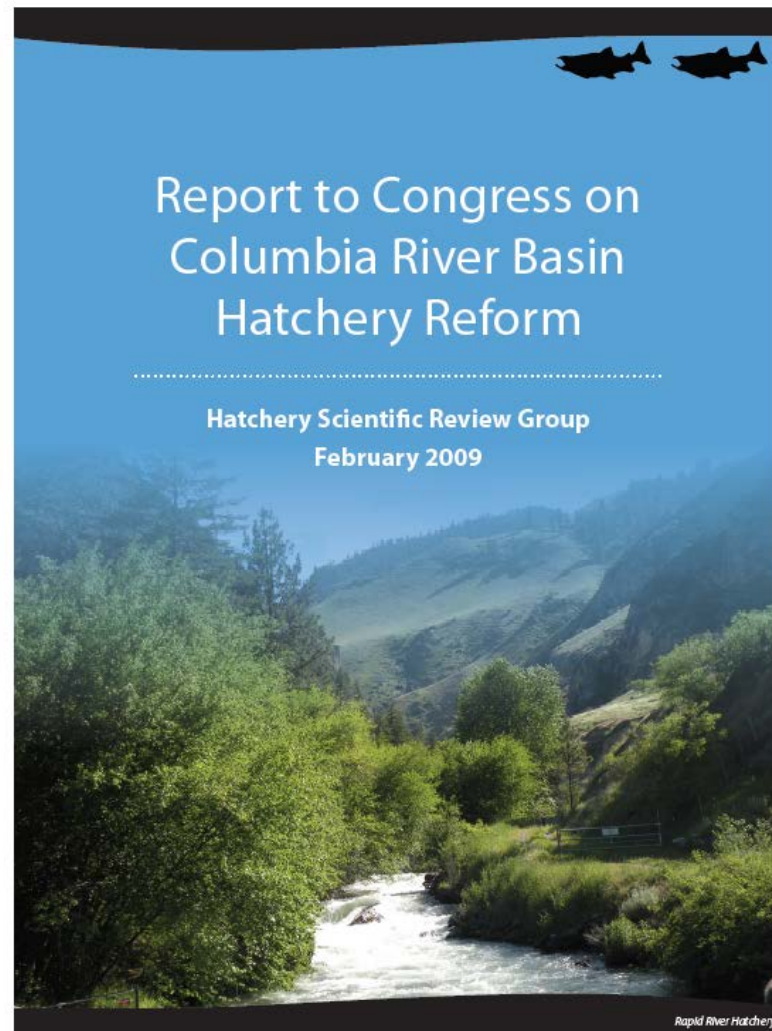
2003

2003

2005

2008

2009



tation

RME

Vork

v (HSRG)





Columbia Basin Hatchery Reform

- The HSRG recommended that managers:
 - Develop clear hatchery program goals for conservation and harvest
 - Design and operate hatcheries in a scientifically defensible manner
 - Monitor, evaluate, and adaptively manage hatchery programs





Columbia Basin Hatchery Reform

- The HSRG:
 - Reviewed natural populations status
 - And situations where hatchery programs operated in or adjacent to natural populations....
 - Provided recommendations to meet conservation and harvest goals
 - Also recognized the importance of wild fish management zones



Columbia Basin Hatchery Reform

Integrated Goal:

*1 population,
2 environments*



Integrated

Segregated Goal:

*2 populations,
2 environments*



Segregated

NOR

HOR

pHOS

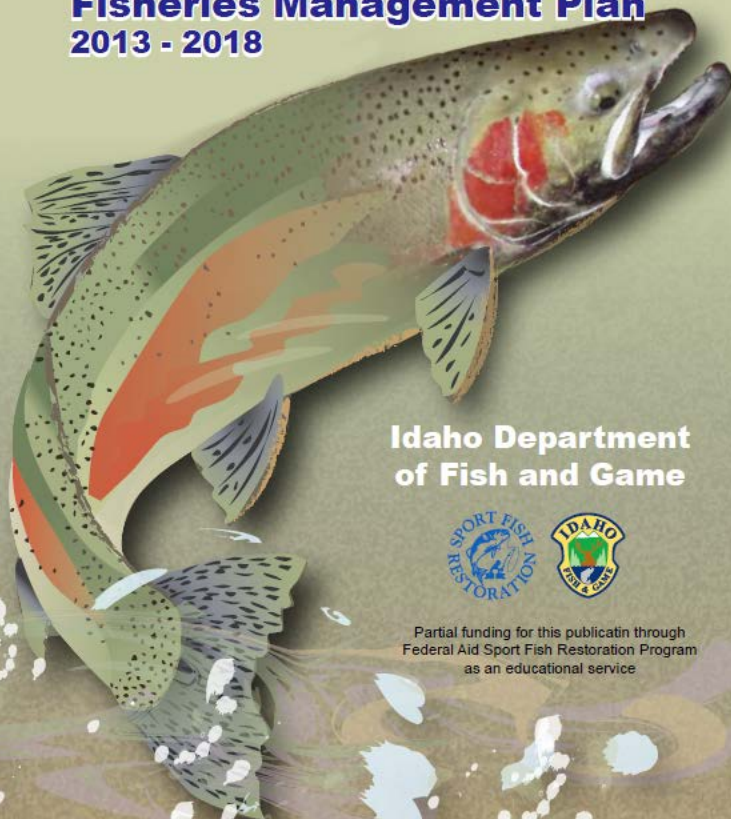
pNOB

PNI



State Policy Guidance

Fisheries Management Plan 2013 - 2018



Idaho Department
of Fish and Game



Partial funding for this publication through
Federal Aid Sport Fish Restoration Program
as an educational service

**A Comprehensive Guide
to Managing Idaho's Fisheries Resources**

HATCHERY AND GENETIC MANAGEMENT PLAN (HGMP)

Hatchery Program:	South Fork Salmon River Summer Chinook
Species or Hatchery Stock:	Summer Chinook salmon (<i>Oncorhynchus tshawytscha</i>). South Fork stock
Agency/Operator:	Idaho Department of Fish and Game
Watershed and Region:	South Fork Salmon River, Idaho.
Date Submitted:	December 21, 2011; Re-submitted October 28, 2016
Date Last Updated:	October 2016





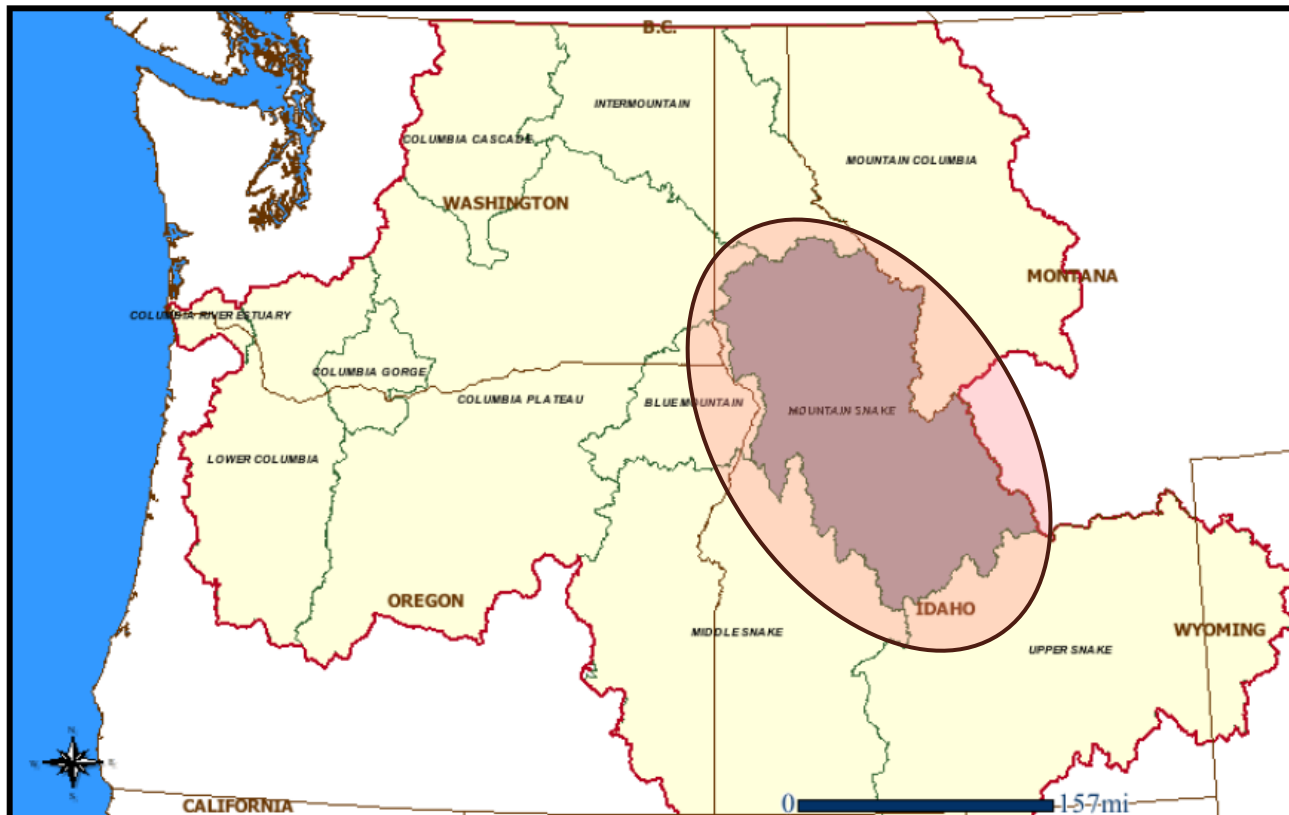
State Policy Guidance

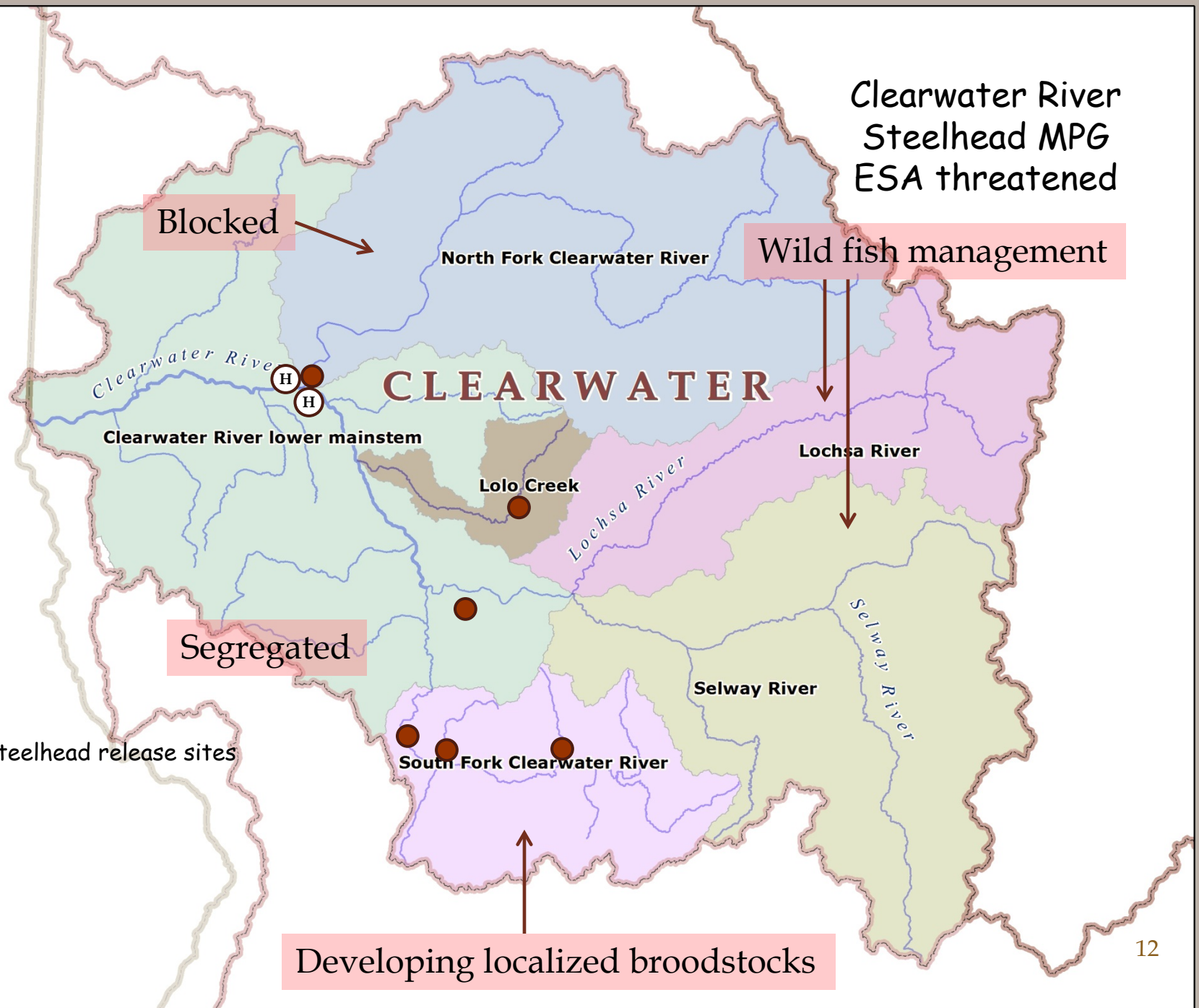
- Fish Management plan - Commission-approved policy
- "The Department will emphasize maintaining remaining populations of wild, native stocks of salmon and steelhead where they occur in sustainable habitat"
- "Hatcheries produce fish primarily for harvest but can be used to address supplementation as well as gene rescue/conservation goals"



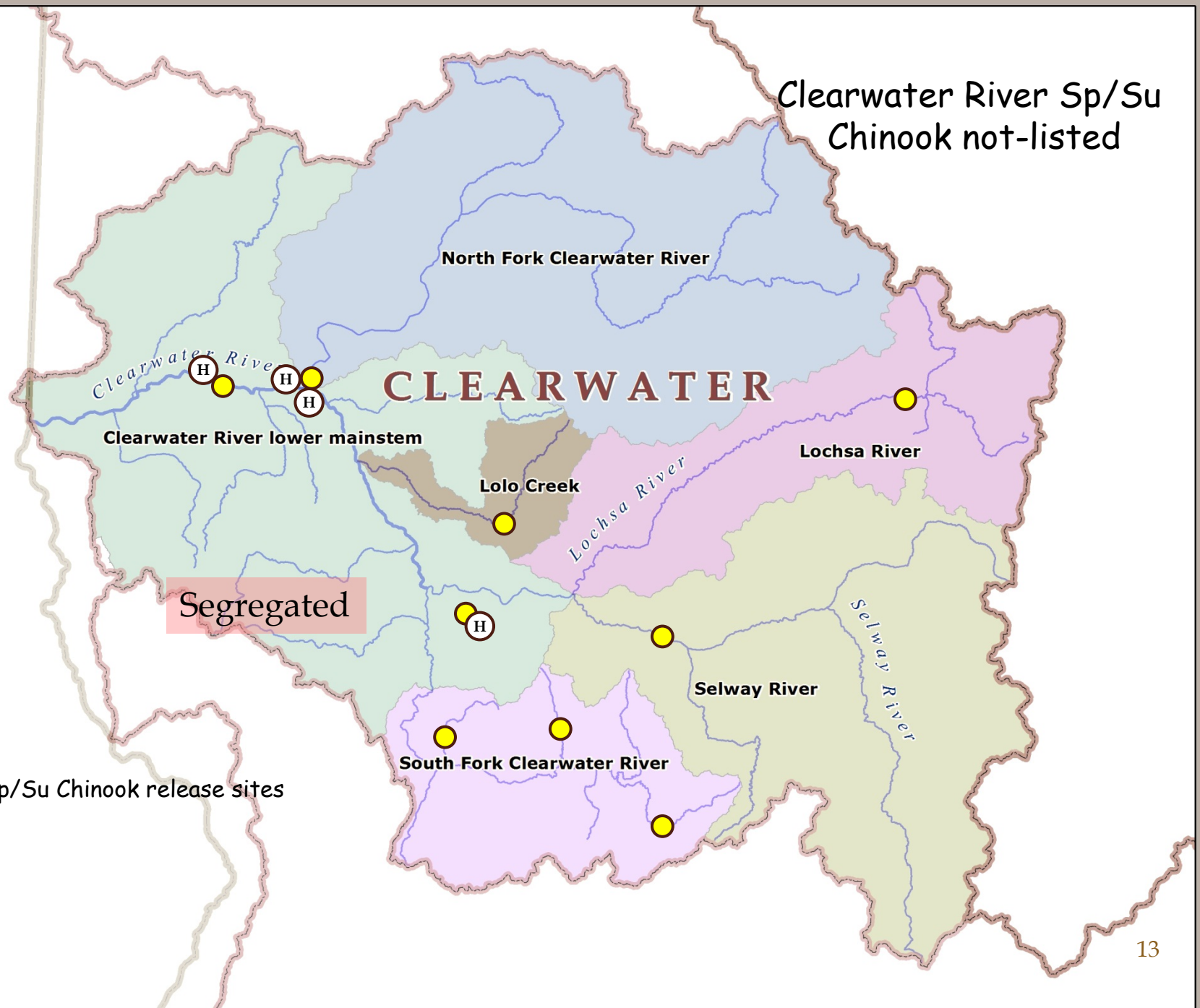
Implementing Hatchery Reform

Columbia River Basin, Mountain Snake Province *Salmon and Clearwater River Watersheds*





Clearwater River Sp/Su
Chinook not-listed



Segregated

North Fork Clearwater River

CLEARWATER

Clearwater River lower mainstem

Lolo Creek

Lochsa River

Lochsa River

Selway River

Selway River

South Fork Clearwater River

● Sp/Su Chinook release sites



Salmon River Steelhead MPG ESA Threatened

Wild fish management

Little Salmon and Rapid River

Chamberlain Creek

North Fork Salmon River

Secesh River

Big, Carnas, and Loon Creek

Panther Creek

S A L M O N

South Fork Salmon River

Segregated

Lemhi River

Middle Fork Salmon River upper mainstem

● Steelhead release sites

Pahsimeroi River

Localized Brood

East Fork Salmon River

Salmon River upper mainstem

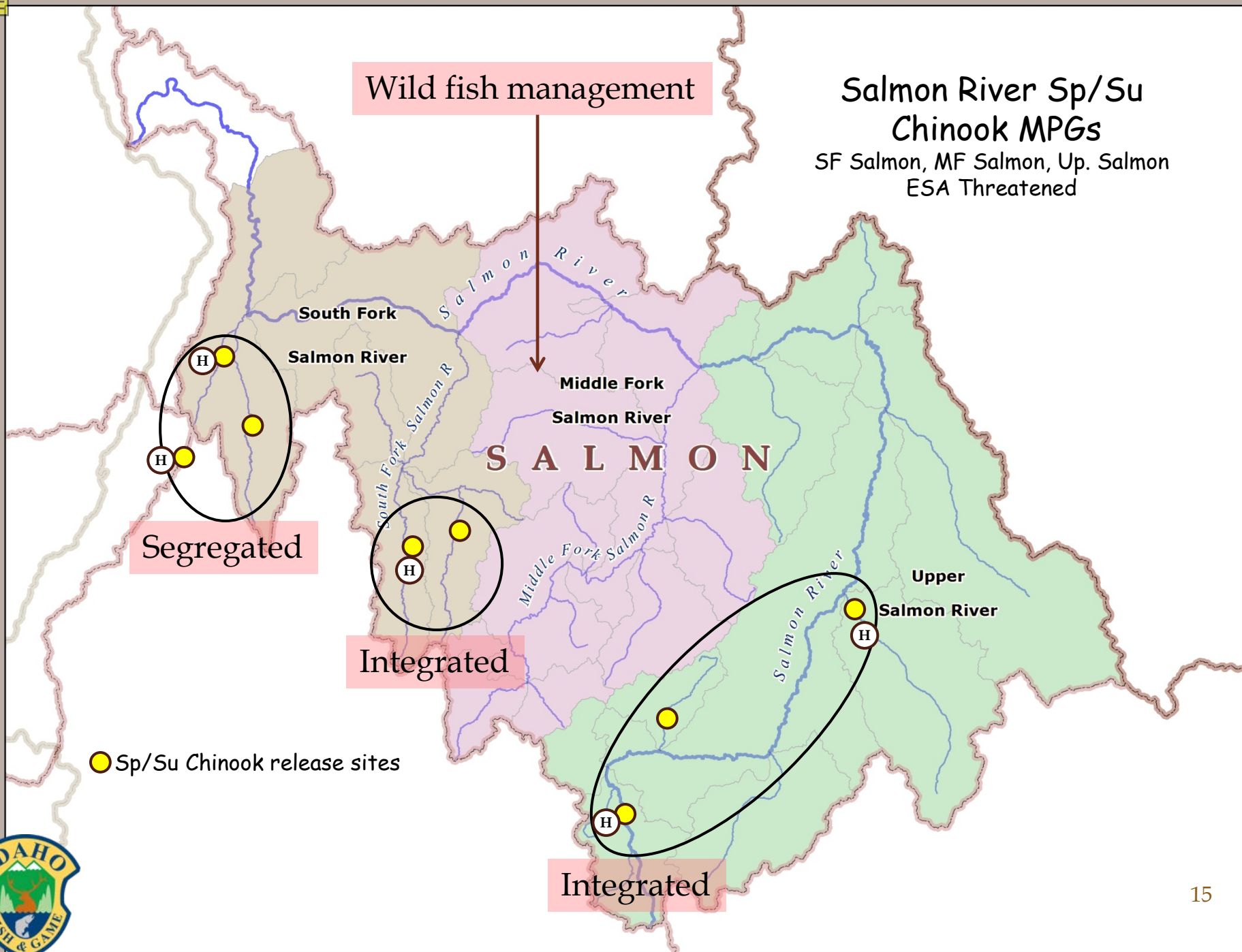
Integrated



Wild fish management

Salmon River Sp/Su Chinook MPGs

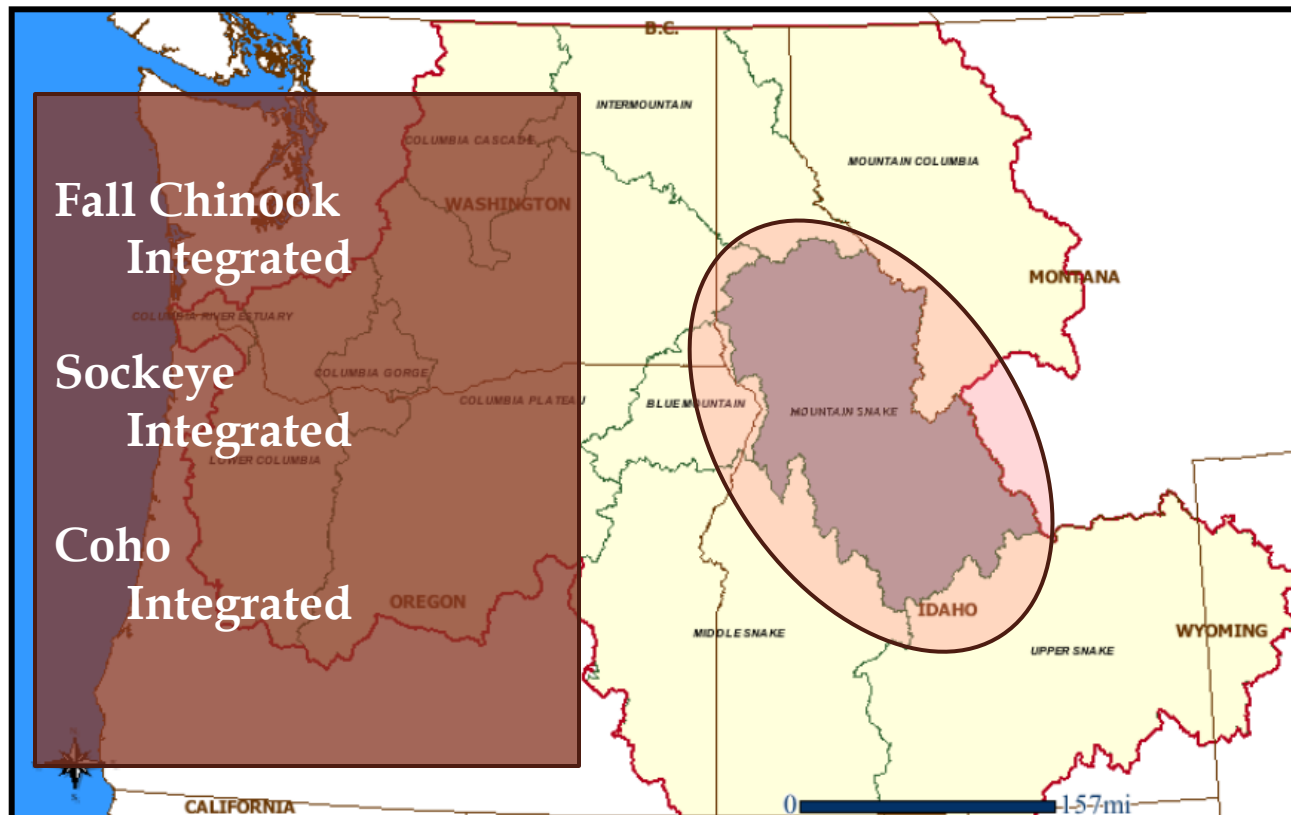
SF Salmon, MF Salmon, Up. Salmon
ESA Threatened



Implementing Hatchery Reform

Columbia River Basin, Mountain Snake Province

Salmon and Clearwater River Watersheds



Implementing Hatchery Reform

- Applying HSRG principles:
- Integration = "stepping stone" programs
- Most programs NOR limited
- "Sliding scale" frameworks used
- Using PBT to evaluate RRS



Summary

- In summary, the state is implementing hatchery reform (consistent with HSRG recommendations) as part of its salmon and steelhead mitigation program.
- The state supports the importance of maintaining wild fish management zones but also supports using hatcheries to augment natural production where appropriate.
- The state places high importance on ensuring that mitigation promises are met and that hatchery fish continue to be produced to meet harvest objectives.



Time for questions?

