



Syilx and Salmon – Past, Present, Future

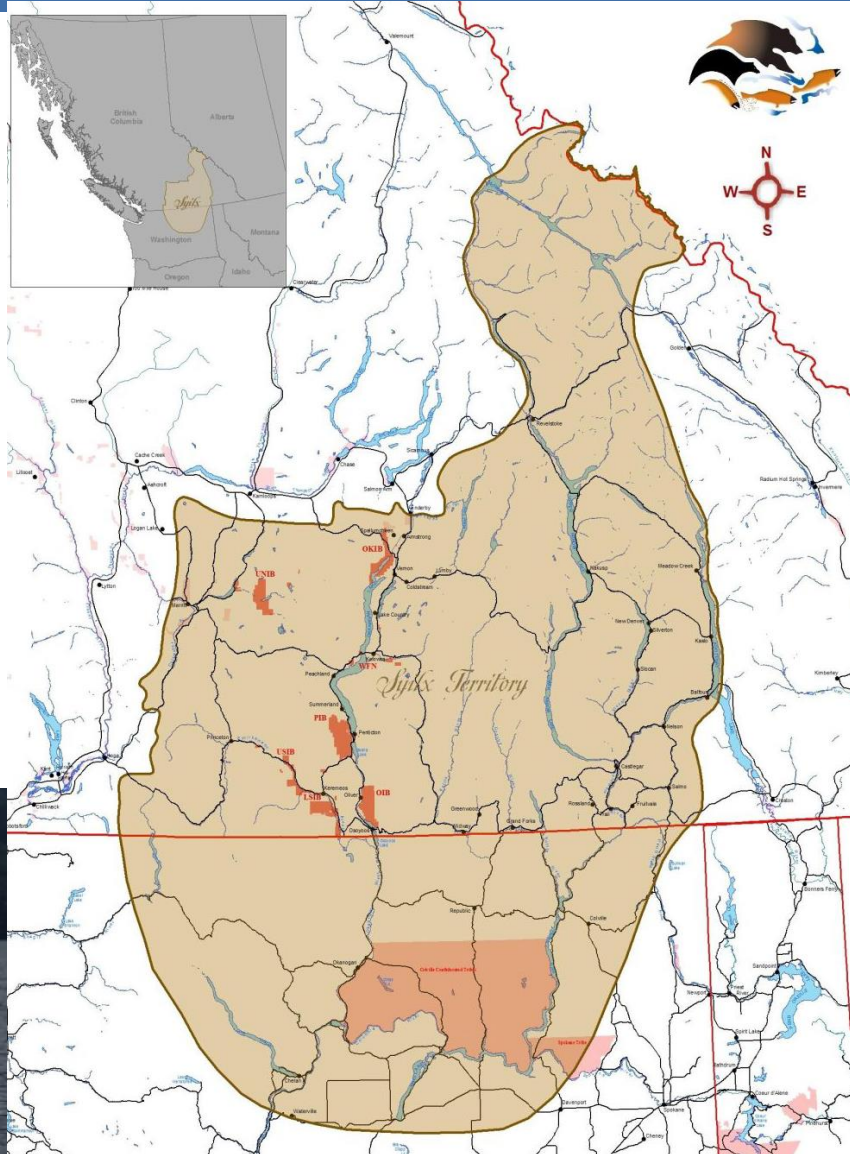


American Fisheries Society – WA/BC Chapter

March 20, 2018, 13:20 - Kelowna

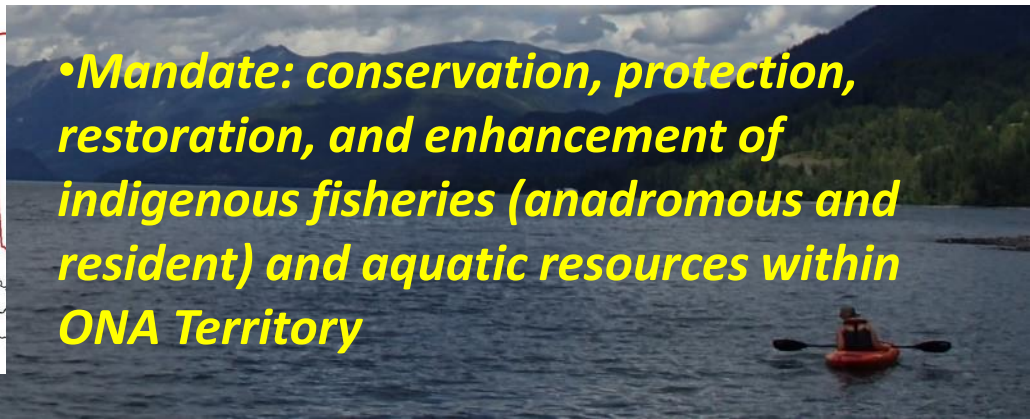
Michael Zimmer

Okanagan Nation Alliance



- Formed in 1981 as an inaugural First Nations government
- Represents 8 member communities
- Territory extends over 69,000 km²
- Operates through 4 primary departments, plus Okanagan Aquatics Enterprises.

•Mandate: conservation, protection, restoration, and enhancement of indigenous fisheries (anadromous and resident) and aquatic resources within ONA Territory



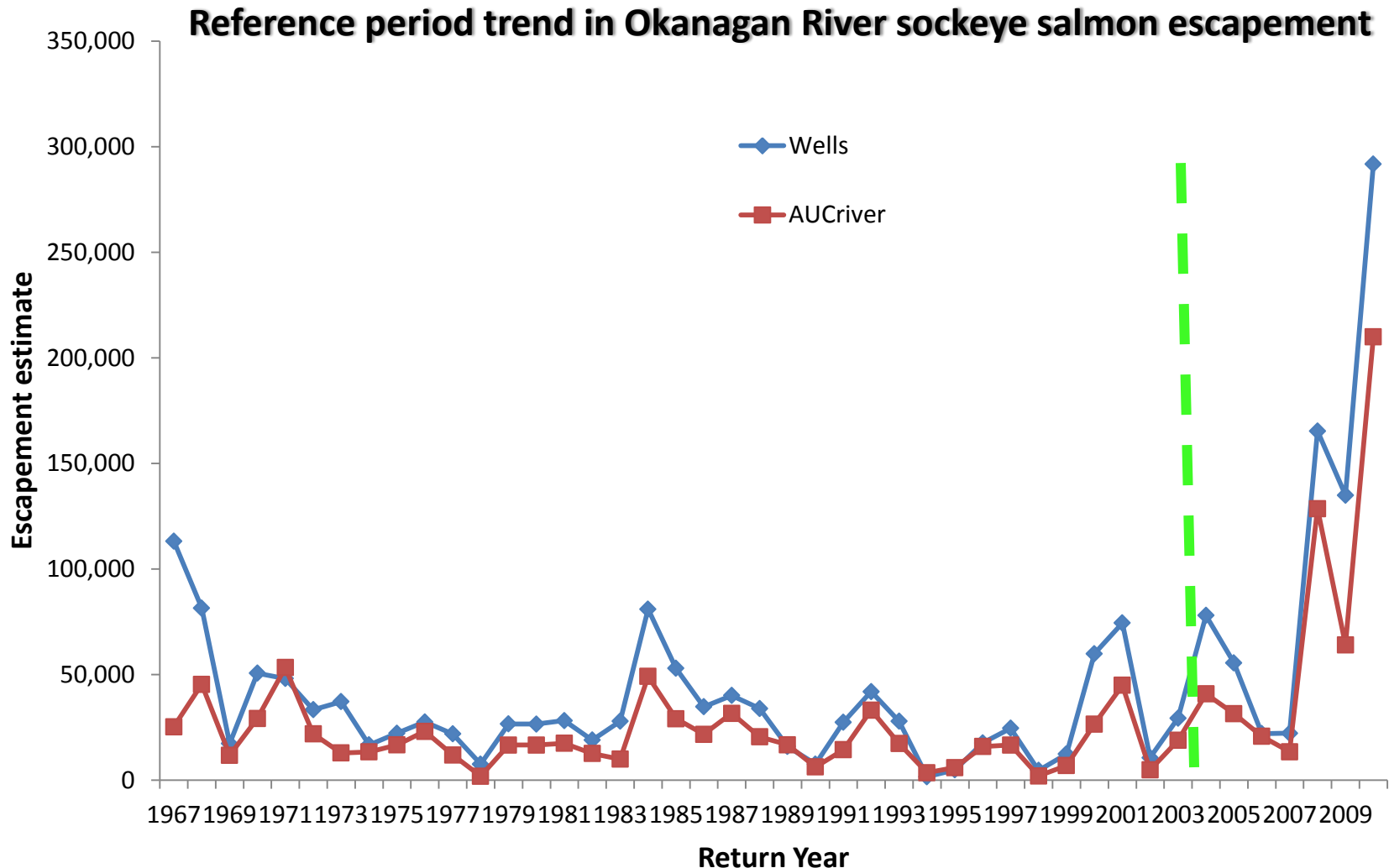
Okanagan Salmon

Salmon are intrinsic to the Syilx culture and diet (First Foods)



Okanagan Salmon

From near collapse to recovery



Starting to see benefits-economic and recreational fisheries



Its not just a sockeye “Sharing a Story”
 “Certification”
 Traditional/responsible trade



Changing attitude on “river fish” in Canada
 Moving fisheries inland



Okanagan SOCKEYE SALMON Select




sc'win

- wild, local
- sustainable fisheries
- foodsafety certified
- government inspected
- traceable: lake-to-plate

kt cp'alk'stim'

This is a Syilx word meaning “cause to come back”. The Okanagan Nation Alliance is mandated to **protect, enhance, conserve and restore** local salmon stocks. Due to their dedicated initiatives in Skaha and Okanagan Lakes, salmon have rebounded from near-collapse to a healthy sustainable stock.

Partial proceeds from sales support fisheries conservation and fair, equitable, local economy.



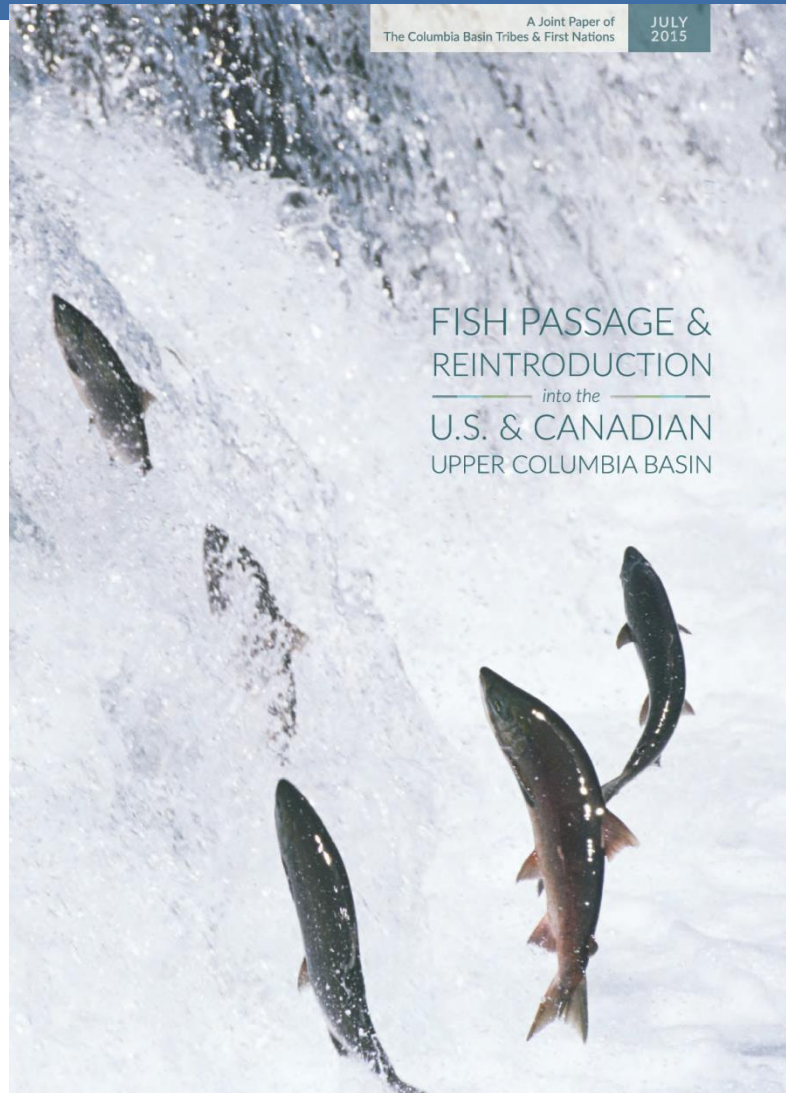
Syilx (Okanagan People)
cap'ik'w'et
 (red river herring)
 tells us *“see the river herring caught in the salmon up the Columbia River is the promise.”*



Okanagan Nation Alliance

www.okanagannation.com

Columbia Salmon Reintroduction



Phase I: Pre-assessment planning for reintroduction and fish passage.

Phase II: Experimental, pilot-scale salmon reintroductions and interim passage facilities.

Phase III: Construct permanent juvenile and adult passage facilities and supporting propagation facilities. Implement priority habitat improvements.

Phase IV: Monitoring, evaluation, and adaptive management. Continue needed habitat improvements.

Columbia Salmon Reintroduction

Key Activities-support Phase I assessment

- Through bilateral government to government relationship identified/confirmed agency contacts
- Capacity modeling (life history matrices, GIS habitat suitability)
- Donor Stock Selection (Genetic, Demographic, and Disease profiling)
- Risk analysis of management modeling scenarios (adults vs juveniles strategies, downstream impacts, harvest, climate)



Columbia Salmon Reintroduction

Timelines/next steps

- **Coordinate assessments with US (Risk Assessment, Habitat Intrinsic Potential, ONA Workplan)**
- **Look at Phase 2 pilot reintroductions summer 2018 (i.e. trap and transport)**
- **Look at ceremonial releases in upper Columbia**
- **Fish in Schools (FinS)**



Columbia Salmon Reintroduction

Outreach / Support

- **Share the message**
- **Invite support and buy-in**
- **Continue to inform**



Questions ?



Michael Zimmer
Okanagan Nation Alliance
L1-1444 Columbia Ave
Castlegar, BC
V1L 3K3

250-304-7341

mzimmer@syilx.org

www.okanagannation.com

